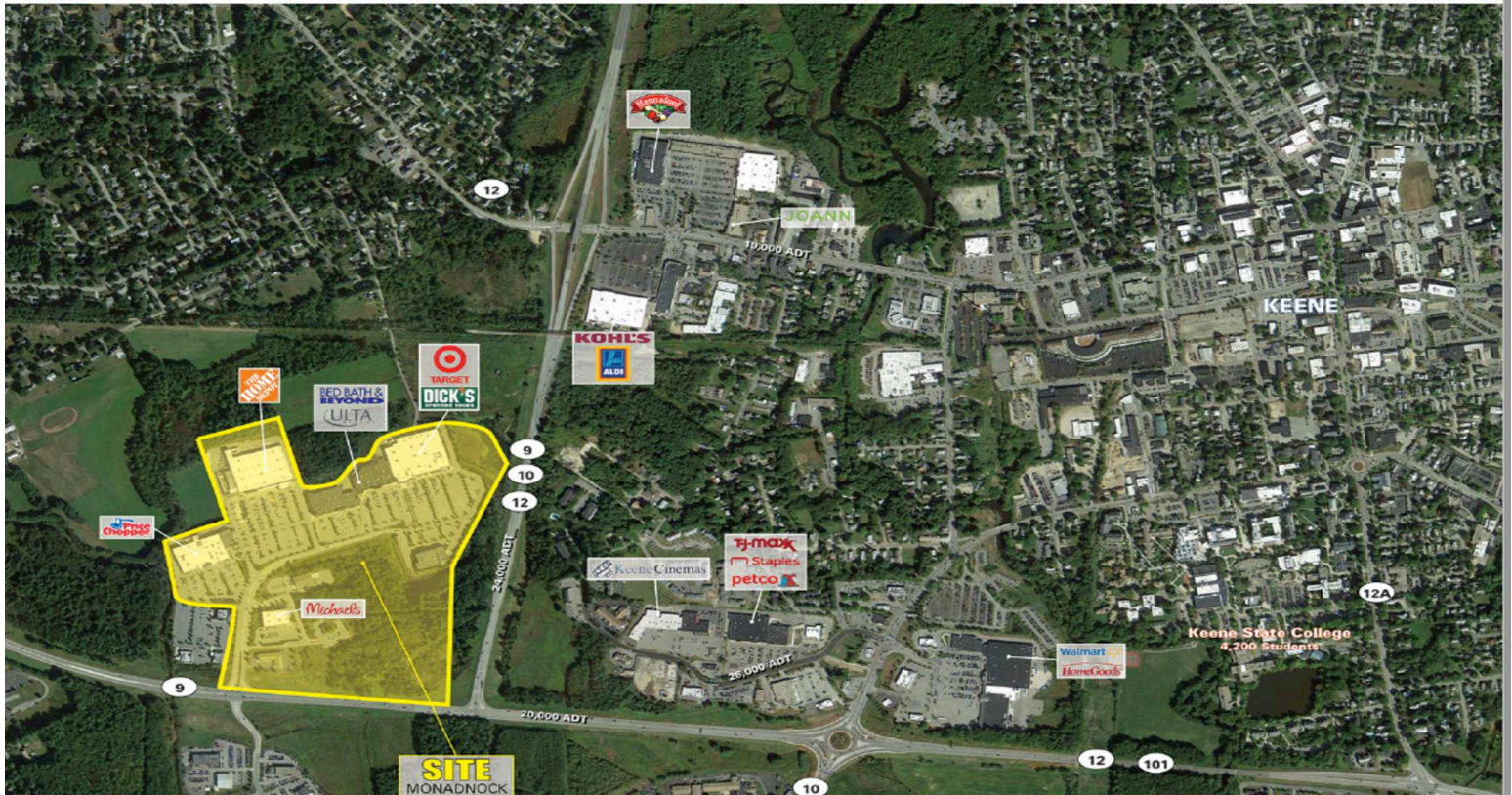


Monadnock Marketplace

30 Ash Brook Road, Keene, NH 03431
Cheshire County



HIGHLIGHTS

For Lease
County: Cheshire
Type: Retail
Total SF: 504,873
Parking Spaces: 2,341
Year Built: 2003
Year Renovated: 2005
Market: Cheshire County, NH

CONTACT

Leasing Department
(212) 710-9330
leasing@kprcenters.com

Garrett B. Secrest
(603) 472-1157
gsecrest@kprcenters.com

Thomas D. Smith
(603) 472-1155
tsmith@kprcenters.com

RETAILERS INCLUDE



Monadnock Marketplace is a 504,873 +/- square foot grocery anchored power center located in Keene, New Hampshire. This property is anchored by an established Price Chopper Supermarket, features National Retailers such as ULTA Beauty, Barnes & Noble, Five Below, Old Navy and Michael's. The center is shadow anchored by Home Depot, Target, and Dick's Sporting Goods which drive significant traffic volume to the property each day. Monadnock Marketplace features a strong mix of tenants and is located at the major intersection of Ash Brook Road and Routes 9,10, and 12 in the heart of the regions primary retail market. Keene, the largest city in southwestern New Hampshire is home to Keene State College and serves as county seat of Cheshire County. Keene is located 54 miles from the state capital of Concord and 58 miles from the city of Manchester, NH.

DEMOGRAPHICS

	1 MILE	3 MILES	5 MILES
Population	1,074	23,353	29,034
Households	515	9,587	12,161
Average Household Income (\$)	86,200	104,002	101,197
Median Household Income (\$)	71,146	84,661	84,595

Monadnock Marketplace

30 Ash Brook Road, Keene, NH 03431
Cheshire County



NAP-1	Home Depot				
NAP-2	Dick's Sporting Goods				
NAP-3	Target				
NAP-4	Days Inn Motels				
NAP-5	New Hampshire Liquor & Wine Outlet				
1	Price Chopper	73,883 SF			
2	Fresenius Medical	9,900 SF			
3	ULTA Beauty	10,790 SF			
4A	Barnes & Noble	11,645 SF			
4B	Five Below	9,255 SF			
5	Old Navy	11,564 SF			
7	One Stop Country Pet Supply		6,610 SF		
8	Mattress Firm		6,000 SF		
9	Planet Fitness		20,413 SF		
10	Michaels		21,718 SF		
11	Longhorn Steakhouse		5,547 SF		
12	Chili's Grill & Bar		5,855 SF		
13	Kay Jewelers		3,002 SF		
14	Yankee Candle		2,000 SF		
15	GameStop		1,736 SF		
15A	Panera Bread		3,634 SF		
16	Available		6,000 SF		